



The unofficial guide for “Rookie” marching band parents

What we all wish we had known but did not know to ask!

Wake Forest High School Marching Cougars
Joey Tucker, Director



What's so great about Marching Band?

Ask 100 parents this question, and you'll get 100 different answers. For some the benefits are seeing their child's self-confidence explode; others enjoy the friendship network. Another benefit is giving their child a sense of pride and accomplishment after working hard and giving a great performance in front of an excited crowd.

Being a member of the Wake Forest High School Marching Cougars will give your child a valuable educational and social experience. They will work hard and experience many triumphs, as well as some hardships and disappointments – things that will prepare them for the “real world” and life after high school.

The transition from middle school band programs to high school band programs is huge, especially in marching band. The increased expectations come with greater rewards, in terms of your student's accomplishments and in the pride you will have in watching their accomplishments. But, walking into WFHS on the first day of school knowing 60 people will help the transition much easier.

You will have many questions about the marching band program at Wake Forest High School. This guide will show some of the finer points of making the most of your years as a band parent and hopefully answer many of the questions you have. If you have questions that are not answered in this guide, please contact your band director or any member of the WFHS Band Boosters.

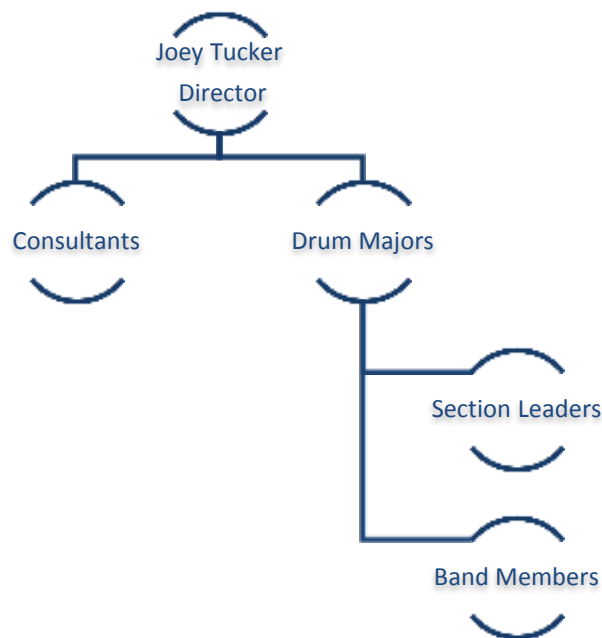
Congratulations and welcome aboard!





LEADERSHIP

Leadership within the Wake Forest High School Marching Band is a privilege bestowed upon those students whose actions and behavior have demonstrated a high standard of discipline and maturity as individuals, and a dedication to the success of the band. These students have made a commitment to make the band the best it can possibly be. Student leaders are expected to assist the Band Directors, as requested, and to lead by example throughout the year.



- **Band Director** – Joey Tucker, our Director of Bands, is our “Head Coach!” He is responsible for overseeing the daily operations of the band program, including hiring and supervising consultants, assisting with the Booster program and educating our children!
- **Consultants** – Extra staff hired by the director to improve the band, work with the percussion and guard. Think of them as “Assistant Coaches.”
- **Drum Majors** – These students are the lead conductors of the band. Once “rookies” just like your kids, they are now upper-classmen and conduct the band during the marching season.
- **Section Leaders** – The band has different components. Each of the components has student leaders, who help rehearse small groups of students.





The Essence of the Wake Forest Marching Cougars

The Wake Forest Marching Cougars is a group activity, and teamwork is the essence of what makes it a great program. The successes of individual efforts are judged by group performance. It is important for parents to understand that, while your child is very important, the director and staff assistants must also consider the best interests of a program with many other students. The following are character traits that every member of the WFHS marching cougars must adhere to:

- **Pride** – To instill in each band member pride in their talent and in their band. You get out of it what you put into it.
- **Unity** – To build an intense desire to belong to a dedicated team.
- **Success** – To reap the internal benefits of hard work, practice, discipline, and teamwork.
- **Respect** – To promote respect within the band and the band members for themselves, each other and for their equipment.

Time Commitment

Without a doubt, marching band is a huge time commitment. Marching Band requires 100% participation at the 2-week long summer band camp, rehearsals twice weekly beginning the Tuesday BEFORE band camp, sectionals on Wednesdays (2nd week after school begins), Friday night home football games, Saturday competitions, and marching in parades.

Time Requirements: All camps, rehearsals, and performances are mandatory! If your child is absent or unable to play/march/perform their part, it will have a negative impact on the efforts of ALL the other students. To put the best musical product on the field, the director and staff need all members present and prepared each and every time.

During most weeks during the fall, your child will have 1-2 days without marching band. Arrange doctor's visits, family trips, etc., on days that your child does not have marching band rehearsals or performance.

Conflicts must be discussed with the director in advance.

Time Management is a key to success in marching band and in life. This may be the most important skill your child acquires as a member of the Wake Forest Marching Cougars. New band students learn quickly that they must use every minute of their day wisely. Your student will learn how to keep a schedule and how to set priorities. Be patient....it may take a few weeks for "rookies" to get the hang of it (but they will.) ☺

Your child will also become punctual. They will be taught the meaning of "**Band time.**" "If you are early, you're on time; if you're on time, you're late; if you're late, you're in trouble." If Band Camp starts at 8:00 AM, that does not mean arrive at 8:00 AM. It means your child should be **READY TO REHEARSE** at 8:00 AM!



Grades: Educational research has shown that the discipline and focus developed in marching band carries over into the classroom. You will often see students in the band room reading and doing homework in-between rehearsals. Granted, students who struggle with time management may have a harder time balancing band and academics, but many “rookie” members can find informal tutors amongst older band students to help them with tough subjects.

Band lingo! Learn it!

- Shako--Hat worn during competition
- Plume--Feather adornment
- Gauntlet--The cuff that is placed at the bottom of uniform sleeve
- Dinkles – Marching shoes
- Mellophone--Marching French Horn
- Sousaphone--Type of tuba used for marching
- Percussion--Any striking instrument, not just drums.
- Auxiliary/Color Guard—dancers, flag throwers, and rifle throwers
- Pit—the non-marching percussion positioned on the front side line
- Drum line—the percussionists that march on the field
- Adjudicators—the judges at competitions
- Coordinate books—small index card booklets that hang off your shoulder that the band writes their dots in
- Dots—your band child’s position coordinates during certain points of the field show



The Wake Forest High School Band Boosters

The parent arm of the WF Band Program. The band boosters are a non-profit volunteer parent organization that serves the WFHS Bands staff and **students** by providing the financial and volunteer support needed to maintain a high achieving organization to enhance & enrich the student's educational and performance experience. All band parents are automatically members of the WFHS Band Boosters.

Parental Involvement

1. Give your child support & encouragement for being in band! Tell him/her how proud you are of what they are learning, and how they are changing from being part of the band!
2. When picking up your kids from band leave your car and get to know the other parents! Better yet, come early to watch the kids' progress and socialize with other band parents. Building relationships with other adults in the program will benefit both you and your child!
3. Come to the Band Booster Meetings! Meetings times and dates will be posted on the Wake Forest Band Boosters website... <http://www.wfhsbands.com/calendar/>. We meet monthly @ 6p in the band room. You'll always walk away with information your kids forgot to tell you.
4. Pay your FairShare on time. We know it's not easy, but it is important to the existence of the band program.
5. Join the "Care Crew" and help with the Care & Feeding of students. During the 2nd week of band camp, parents are needed to help serve dinner. And, kids LOVE baked goods and snacks anytime!
6. Assemble flags. Much of flag assembly involves scissors, not a sewing needle. Fabric must be cut before it can be sewn together. (But if you can sew, we could really use your help.)
7. Attend football games and competitions to cheer for them! The band ALWAYS performs better with a large cheering block behind them.
8. Volunteer to Chaperone. After all, you're coming to the game/competition anyway!
9. Join our Pit Crew for performances. Not everything is heavy, and much of it is on wheels. Not able to attend? Lend a hand at the school when you drop-off & pick-up your child.
10. Help with FUNdraisers! The more hands, the easier the work!





THE BAND ON A BUDGET

All Wake Forest High School Band programs are funded by students and families. The Wake Forest High School Band Boosters are a non-profit organization (made up of band parents or guardians) designed to collect and raise funds in order to run these Band Programs. Marching band is an extra-curricular activity which receives little funding from the school system (this is usually a surprise to Rookie parents). That is why the cost of funding this worthwhile activity is shared equally by all the participants and is referred to as a student's "**FairShare**."

Paying your student's "**FairShare**" is part of the commitment of being in marching band. The "**FairShare**" funds everything from purchasing music for the season, caring for uniforms, paying staff/consultants, bus transportation for away football games and competitions, equipment and large instrument maintenance, etc.

This fair share amount pays for (examples ONLY):

- Uniform Reserve: \$2000 - NEW uniforms every 7 years: \$300/each - \$30,000 total
- NEW Marching Drumline Instruments every 5 years: \$10,000
- Music, Pit and Guard Instructors: \$10,000 / year
- Percussion Refurbishment and Large Instrument Repair-Replace: \$8,000/year
- Marching Band Music and Drill Design: \$3000 / year
- Transportation for Competitions (mileage/driver/gas): \$2500
- Marching Band Shirts/Hats: \$2200/year
- Band Camp Supplies: \$2000/year
- Props: \$1000/year
- Competition Fees: \$600/year
- Uniform Cleaning and Alteration Charges: \$1200/year
- Trailer and Pit Cart Repairs: \$500/year
- Insurance (general liability and vehicle/instrument): \$1500/year
- Accountant and Fees: \$1500/year
- Awards/Picnic/Supplies/Bank-Web Fees: \$4,000/year

"**FairShare**" payments can be made in installments during marching band season (deadlines for these installments are on the marching band calendar). And, to help offset the cost of the "**FairShare**," you and your student can participate in fundraisers.

If your child quits marching band or is removed by the director for disciplinary reasons, "**FairShare**" is still owed and no refunds are issued.

The fair share for 2016-2017 Marching Band (and Color Guard) is **\$500.00** per student.

- A 10% discount will be applied for families with two or more students

We put the FUN in FUNdraising!

You and your student will have several opportunities to fundraise to help the marching band. While some fundraisers are designed to support the marching band's general operating fund, most fundraisers are specifically designated to help offset the cost of the "**FairShare**."



15%-20% of families pay for ALL of their “**FairShare**” because of successful, committed fundraising. Some fundraisers that exist are: helping at the PNC Arena and Walnut Creek Amphitheater, and more. Fundraisers are also a time to work together with your fellow band members and band parents and are a great way to make new friends.

After the “**FairShare**” amount is met, any additional money raised can be applied to other band-related costs, such as trips! AND...any extra money in the band student account at the end of the school year will roll over to the next year if your student remains in the band! The money is also transferrable to a sibling if he/she is currently in Wake Forest High School’s band program.

What is the Operational Budget? (Available August, 2016)

- The absolute **bare essentials**; no frills; minimum expenses to operate a successful/competitive bands program beyond basic district provisions.
- Developed using a bottoms-up approach, zero-dollar base, assessing specific program needs.
- Two-Thirds of our expenses are incurred August – November.
- Cash flow is closely managed with payments made on schedule.

The Operational Budget is funded by YOUR WFHS marching fees and fundraising!